



VF Licensed
Sports Group



DEALER BRANDED APPAREL

SPRING 2016 PRINTABLES
FALL 2016 EMBROIDERY

CONTENTS



SPRING 2016 PRINTABLES

MEN'S
06

WOMEN'S
34

MEN'S SYNTHETIC
REPLENISHMENT
52

CORE
REPLENISHMENT
62

CUSTOMIZATIONS
66

FALL 2016 EMBROIDERY

MEN'S
82

WOMEN'S
98

CUSTOMIZATIONS
112





WE WOULD LIKE TO EXPRESS
OUR SINCERE GRATITUDE
AND APPRECIATION TO
OUR PARTNERS AT THE LAS
VEGAS HARLEY-DAVIDSON®
DEALERSHIP FOR THEIR
SUPPORT AND PARTICIPATION
OF THIS CATALOG.



ON MODEL/ POWER CRUISER





01. CAGED ADRENALINE
Short sleeve crew neck jersey tee
5503: S-XL; 55X3: 2XL-3XL; 5XX3: 4XL-5XL
Black (HB57)



02. DARK SKULL
Short sleeve v-neck jersey tee
5M33: S-XL; 5X3M: 2XL-3XL
Black (HB58)



03. POWER CRUISER

Short sleeve crew neck mini yarn-dye stripe jersey tee

5J32: S-XL; 5X2J: 2XL-3XL

Charcoal Heather-Black/Black (HB5X)



04



05



06



07



04. MIDNIGHT DEVOTION

Short sleeve crew neck jersey tee

5503: S-XL; 55X3: 2XL-3XL; 5XX3: 4XL-5XL
Black (HB5F)

05. HARLEY® ADDICTION

Short sleeve crew neck jersey tee

5503: S-XL; 55X3: 2XL-3XL; 5XX3: 4XL-5XL
Black (HB5D)

06. INFINITE FLAMES

Short sleeve crew neck jersey tee

5503: S-XL; 55X3: 2XL-3XL; 5XX3: 4XL-5XL
Black (HB56)

07. HARLEY® IRON

**Short sleeve crew neck synthetic tee
with wicking**

5B36: S-XL; 5X6B: 2XL-3XL
Black (HB5Y)

ON MODEL/ HARLEY ADDICTION



08



09

08. FURIOUS FIRE

Short sleeve crew neck jersey tee

5503: S-XL; 55X3: 2XL-3XL; 5XX3: 4XL-5XL
Black (HB55)

09. BLACKTOP SPIRIT

Short sleeve crew neck jersey tee

5503: S-XL; 55X3: 2XL-3XL; 5XX3: 4XL-5XL
Black (HB5H)

10. CUSTOM IRON

Short sleeve crew neck jersey tee

5503: S-XL; 55X3: 2XL-3XL; 5XX3: 4XL-5XL
Black (HB5C)



10



11. STREET ADDICTION

Short sleeve crew neck jersey tee

5503: S-XL; 55X3: 2XL-3XL; 5XX3: 4XL-5XL
Black (HB5G)

12. VINTAGE HERITAGE

Short sleeve crew neck jersey tee

5503: S-XL; 55X3: 2XL-3XL; 5XX3: 4XL-5XL
Black (HB59)

13. ARMORED GREASE

Short sleeve crew neck jersey tee

5503: S-XL; 55X3: 2XL-3XL; 5XX3: 4XL-5XL
Black (HB5A)

ON MODEL / ARMORED GREASE



11



12



13



14. ROAD ADDICTION

Short sleeve crew neck jersey tee

5503: S-XL; 55X3: 2XL-3XL; 5XX3: 4XL-5XL
Black (HB5E)



15. CHAIN REUNION

Short sleeve crew neck jersey tee

5503: S-XL; 55X3: 2XL-3XL; 5XX3: 4XL-5XL
Black (HB5K)



16. V-TWIN IRON

Short sleeve crew neck jersey tee

5503: S-XL; 55X3: 2XL-3XL; 5XX3: 4XL-5XL

Black (HB5J)



17



18



19



20

17. FUELED LEGEND

Short sleeve crew neck jersey tee

5504: S-XL; 55X4: 2XL-3XL; 5XX4: 4XL-5XL

Smoke (HB7K)

18. CRUISING EMPIRE

Short sleeve crew neck jersey tee

5504: S-XL; 55X4: 2XL-3XL; 5XX4: 4XL-5XL

Cloudburst (HB5S)

19. BOLD HISTORY

Short sleeve crew neck jersey tee

5504: S-XL; 55X4: 2XL-3XL; 5XX4: 4XL-5XL

White (HB5N)

20. ENDLESS ROAD

Short sleeve crew neck jersey tee

5504: S-XL; 55X4: 2XL-3XL; 5XX4: 4XL-5XL

Kelly Green (HB5R)



ON MODEL / ENDLESS ROAD

JANUARY - MARCH DELIVERY - SPRING 2016



21. SUPERIOR FORCE

Short sleeve crew neck jersey tee

5504: S-XL; 55X4: 2XL-3XL; 5XX4: 4XL-5XL
Moss Green (HB5M)

22. CHROME METAL

Short sleeve crew neck jersey tee

5504: S-XL; 55X4: 2XL-3XL; 5XX4: 4XL-5XL
Charcoal Heather (HB5T)

23. RETRO THUNDER

Short sleeve crew neck jersey tee

5504: S-XL; 55X4: 2XL-3XL; 5XX4: 4XL-5XL
Flame Orange (HB5P)

24. PISTONS OF FURY

Short sleeve crew neck jersey tee

5504: S-XL; 55X4: 2XL-3XL; 5XX4: 4XL-5XL
Blue Graphite (HB5Q)

ON MODEL/RETRO THUNDER



21



22



23



24



25. END OF THE ROAD

Short sleeve crew neck mineral wash tee

5J31: S-XL; 5X1J: 2XL-3XL; 5Z1J: 4XL-5XL
Castlerock (HB7J)

26. FLIGHT TO BE FREE

Short sleeve crew neck jersey tee

5504: S-XL; 55X4: 2XL-3XL; 5XX4: 4XL-5XL
Dress Blues (HB5W)

27. STAY MAINTAINED

Short sleeve crew neck jersey tee

5504: S-XL; 55X4: 2XL-3XL; 5XX4: 4XL-5XL
Walnut (HB5L)

28. AWESOME LEGEND

Short sleeve crew neck jersey tee

5504: S-XL; 55X4: 2XL-3XL; 5XX4: 4XL-5XL
Asphalt (HB5V)

29. EXTREME THROTTLE

Short sleeve crew neck jersey tee

5504: S-XL; 55X4: 2XL-3XL; 5XX4: 4XL-5XL
Dark Cardinal (HB5U)

25





30



31



32



33

30. IGNITED

Short sleeve crew neck jersey pocket tee

5508: S-XL; 55X8: 2XL-3XL; 5XX8: 4XL-5XL
Black (HB5Z)

31. BIKER BRED

Short sleeve crew neck jersey pocket tee

5508: S-XL; 55X8: 2XL-3XL; 5XX8: 4XL-5XL
Dark Cardinal (HB61)

32. CUSTOMIZED DIFFERENTLY

Short sleeve crew neck jersey pocket tee

5508: S-XL; 55X8: 2XL-3XL; 5XX8: 4XL-5XL
White (HB64)

33. RIDE WITH HONOR

Short sleeve crew neck jersey pocket tee

5508: S-XL; 55X8: 2XL-3XL; 5XX8: 4XL-5XL
Deep Blue (HB63)

34. HISTORIC RUMBLE

Short sleeve crew neck jersey pocket tee

5508: S-XL; 55X8: 2XL-3XL; 5XX8: 4XL-5XL
New Texas Orange (HB62)



34



35



36



37



38

35. IRON THUNDER

Crew neck jersey tank

5500: S-XL; 55X0: 2XL-3XL; 55Z0: 4XL-5XL
Charcoal Heather (HB65)

36. LEGENDARY THROTTLE

Crew neck jersey muscle tee

5501: S-XL; 55X1: 2XL-3XL; 5X01: 4XL-5XL
Black (HB66)

37. INFINITE RIDER

Crew neck jersey muscle tee

5501: S-XL; 55X1: 2XL-3XL; 5X01: 4XL-5XL
Bright Cardinal (HB67)

38. IRON MACHINE

Crew neck jersey pocket muscle tee

5502: S-XL; 55X2: 2XL-3XL; 55Z2: 4XL-5XL
White (HB68)



ON MODEL/ LEGENDARY THROTTLE

39. POWER THE JOURNEY

Long sleeve crew neck jersey tee with cuffs

5510: S-XL; 5X10: 2XL-3XL; 5XX0: 4XL-5XL

Dark Cardinal (HB6A)



39

40. LEATHER & CHROME

Long sleeve crew neck jersey tee with cuffs

5510: S-XL; 5X10: 2XL-3XL; 5XX0: 4XL-5XL

White (HB69)



40

41. MOTOR MADNESS

Long sleeve crew neck jersey tee with cuffs

5510: S-XL; 5X10: 2XL-3XL; 5XX0: 4XL-5XL

Cloudburst (HB6B)



41

42. FREEDOM FLUID

Long sleeve crew neck jersey pocket tee
with cuffs

5512: S-XL; 5X12: 2XL-3XL; 5Z12: 4XL-5XL
Black (HB6C)



42



43

43. ENDLESS CRUISER

Long sleeve crew neck pullover fleece

5546: S-XL; 5X46: 2XL-3XL; 5XX6: 4XL-5XL
Cloudburst: (HB6F)

44. KEEP YOUR BIKE

Long sleeve hooded pullover fleece with
pouch pocket

5642: S-XL; 5X42: 2XL-3XL; 5XX2: 4XL-5XL
Dark Cardinal (HB6D)

45. FLAMING RIDE

Long sleeve hooded full-zip fleece with
pouch pocket

5693: S-XL; 5X93: 2XL-3XL; 5Z93: 4XL-5XL
Black (HB6E)



44



45







46



47

46. WINGS OF DESTINY

Deep v-neck micro-dot burnout jersey boyfriend tank

5J36: XS-XXL; 5X6J: 1X-3X

Living Coral (HB6T)

47. SWEET SKULL

Short sleeve deep v-neck dip-dyed jersey tee

5J38: XS-XXL; 5X8J: 1X-3X

Living Coral-Steel Heather Ombre (HB71)

48. FUELED PASSION

Long sleeve open neck French terry pullover with cuffs and high-low hem

5K39: XS-XXL; 5X9K: 1X-3X

Charcoal Marled (HB7B)



48



49. HISTORIC ODDS

Deep v-neck stretch jersey color-blocked tank with high-low hem

5J34: XS-XXL; 5X4J: 1X-3X
Black/White (HB6R)

50. OFF THE CHAIN

1/2-sleeve raglan v-neck color-blocked stretch jersey tee

5K32: XS-XXL; 5X2K: 1X-3X
Tangerine Tango/Black (HB75)
Nailheads

51. END TO THE JOURNEY

3/4-sleeve raglan rayon blend jersey tee with striped front, and curved hem

5K34: XS-XXL; 5X4K: 1X-3X
Black/Black-White (HB76)

52. HISTORIC DREAMS

Short sleeve open neck jersey tee

5Q26: XS-XXL; 5XQ6: 1X-3X
Wild Apricot Heather (HB6V)

53. SERPENTINE LINES

Long sleeve full-zip fleece hoodie with pouch pocket

5F23: XS-XXL; 5XF3: 1X-3X
Charcoal Heather/White (HB7D)

49



50



51



52



53



54



55



56



57



54. ENDLESS CURVES

Scoop neck stretch rib tank

5M04: XS-XXL; 5MX4: 1X-3X

White (HB6N)

55. V-TWIN PRIDE

1/2-sleeve scoop neck marble jersey tee with side vents

5J37: XS-XXL; 5X7J: 1X-3X

Black-Red Bud (HB6Z)

56. HAUNTING SPIRIT

Long sleeve open neck jersey tee with cuffs and thumbholes

5K37: XS-XXL; 5X7K: 1X-3X

Black (HB79)

Rhinestones

57. CUSTOM CURVES

Short sleeve open neck stretch jersey tee with raw edges

5K33: XS-XXL; 5X3K: 1X-3X

Dark Plum (HB74)

Rhinestones & Foil

58. NONSTOP RAMBLE

Long sleeve split-neck tri-blend fleece hoodie with pouch pocket

5H38: XS-XXL; 5X8H: 1X-3X

Tri Dark Plum Heather/Dark Plum (HB7C)

58



59



60



61



62

59. CUSTOM PRIDE

Scoop neck rayon blend jersey tank with curved hem

5J33: XS-XXL; 5X3J: 1X-3X
Poppy (HB6Q)

60. HAVEN RIDE

Short sleeve scoop neck seam burnout jersey tee with curved hem

5J39: XS-XXL; 5X9J: 1X-3X
Fountain Heather (HB72)

61. FIRE SKULL

Short sleeve deep v-neck jersey tee

5B38: XS-XXL; 5X8B: 1X-3X
Charcoal Heather (HB73)

Rhinestones

62. WIND IN YOUR HAIR

Long sleeve deep v-neck jersey tee with cuffs and thumbholes

5U15: XS-XXL; 5U5X: 1X-3X
Sunshine (HB6Y)



ON MODEL/ HAVEN RIDE



63



63. STREET THUNDER
Long sleeve deep v-neck stretch
jersey tee with sublimated tattoo
sleeves

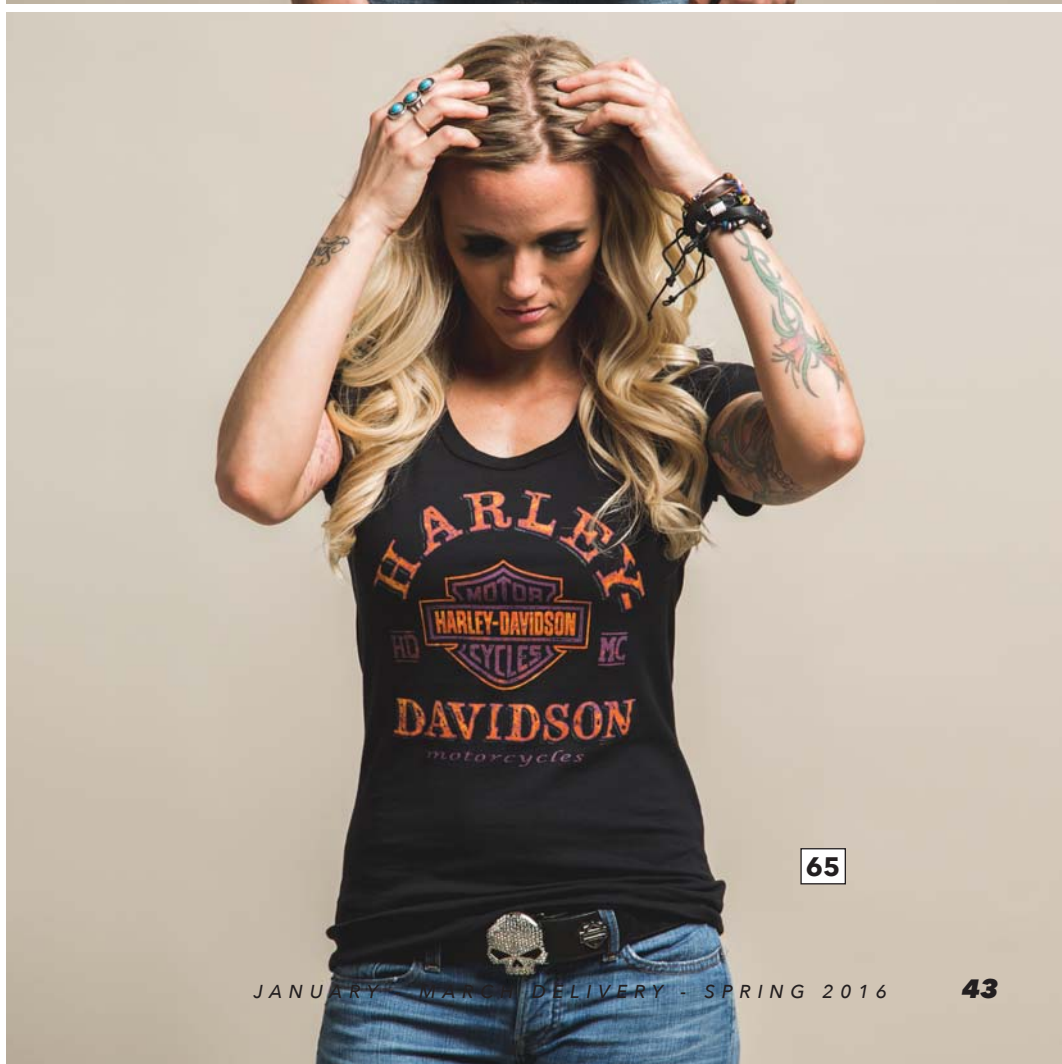
5K35: XS-XXL; 5X5K: 1X-3X
Black (HB78)

64. IRON DANCER
Long sleeve scoop neck sparkle
jersey tee

5K36: XS-XXL; 5X6K: 1X-3X
Wood Violet Heather (HB77)

65. SPEEDY CHROME
Short sleeve scoop neck stretch
jersey tee

5E34: XS-XXL; 5X4E: 1X-3X
Black (HB6U)





66



67



68



69



66. FORGED DESTINY

Deep v-neck jersey tank

5L15: XS-XXL; 5L5X: 1X-3X

Deep Blue (HB6P)

67. NEVER BE AFRAID

Scoop neck striped jersey tank with front yoke and curved hem

5J35: XS-XXL; 5X5J: 1X-3X

Black-Charcoal Heather (HB6S)

68. FLAMING POWER

Short sleeve deep v-neck stretch jersey tee

5E35: XS-XXL; 5X5E: 1X-3X

White (HB6W)

69. STREET IRON

Short sleeve dolman open neck color-blocked jersey tee with curved hem

5S21: XS-XXL; 5XS1: 1X-3X

Teal/Black (HB6X)

70. FLAMMABLE FUEL

Long sleeve v-neck mineral wash thermal tee with cuffs

5T21: XS-XXL; 5XT1: 1X-3X

Black (HB7A)

70



71. WIND TRAIL

Short sleeve crew neck jersey tee

5547: 2T/3T, XS (5/6), S (7/8), M (10/12), L (14/16)
Flame Orange (HB6J)

72. ULTIMATE BIKER

Short sleeve crew neck jersey tee

5547: 2T/3T, XS (5/6), S (7/8), M (10/12), L (14/16)
Black (HB6G)





73



74



75



76

73. BIKER RECON

Short sleeve crew neck jersey tee

5547: 2T/3T, XS (5/6), S (7/8), M (10/12), L (14/16)
Black (HB6H)

74. BIKER FURY

Short sleeve crew neck jersey tee

5547: 2T/3T, XS (5/6), S (7/8), M (10/12), L (14/16)
Deep Blue (HB6K)

75. READY TO ROLL

Long sleeve crew neck jersey tee with cuffs

5531: 2T/3T, XS (5/6), S (7/8), M (10/12), L (14/16)
Charcoal Heather (HB6M)

76. ROARING ENGINE

Long sleeve crew neck jersey tee with cuffs

5531: 2T/3T, XS (5/6), S (7/8), M (10/12), L (14/16)
Black (HB6L)



77



78



79



80



77. SPARK EMOTIONS

Short sleeve crew neck jersey tee

5Q04: XS (4/5), S (6/6X), M (7/8), L (10/12)

Vibrant Yellow (HB7G)

78. SUMMER RAIN

Short sleeve crew neck jersey tee

5Q04: XS (4/5), S (6/6X), M (7/8), L (10/12)

Light Pink (HB7E)

79. SUPERIOR POWER

Short sleeve crew neck jersey tee

5Q04: XS (4/5), S (6/6X), M (7/8), L (10/12)

Neon Heather Green (HB7F)

80. CRUISING STYLE

Short sleeve crew neck jersey tee

5Q04: XS (4/5), S (6/6X), M (7/8), L (10/12)

Neon Yellow (HS03)

81. V-TWIN ATTITUDE

Long sleeve crew neck jersey tee

5B26: XS (4/5), S (6/6X), M (7/8), L (10/12)

Turquoise (HB7H)

81

DESIGNED TO PERFORM

The power of the wind, sun, heat... it all takes its toll. That's why we developed a collection that wicks moisture and keeps riders cool, dry and comfortable, no matter how long the road stretches.

This synthetic collection combines value, performance and style in one package, making it perfect for any season, and any ride.

We're offering flexible ordering options, so you can purchase with your seasonal order, or just as needed, with lower customization minimums.

With this core performance collection and order flexibility, there's no reason not to be riding in comfort and style.



ON MODEL/TURN TO VICTORY

301. BRINGING IT HOME

Sleeveless crew neck synthetic muscle tee with wicking, mesh piecing and droptail hem

5N37: S-XL; 5X7N: 2XL-3XL; 5Z7N: 4XL-5XL

Charcoal Marled/Black (HB4E)





302. SOLID FUTURE

Short sleeve crew neck synthetic tee with wicking, back and underarm mesh piecing, underarm piecing and droptail hem

5N38: S-XL; 5X8N: 2XL-3XL; 5Z8N: 4XL-5XL
White (HB4F)





303. CLEAR VICTORY

Short sleeve crew neck synthetic tee with wicking, back and underarm mesh piecing and droptail hem

5P31: S-XL; 5X1P: 2XL-3XL; 5Z1P: 4XL-5XL
Charcoal Marled/Black (HB4H)





304. FINAL EDITION

**Long sleeve crew neck synthetic tee with wicking, back
and underarm mesh piecing and droptail hem**

5P32: S-XL; 5X2P: 2XL-3XL; 5Z2P: 4XL-5XL

White (HB4J)





305. TURN TO VICTORY

Long sleeve mock neck synthetic tee with wicking and droptail hem

5P34: S-XL; 5X4P: 2XL-3XL; 5Z4P: 4XL-5XL
Black (HB4L)





SUGGESTED PROGRAM CUSTOMIZATIONS

NEW

**DEALER NAME
HARLEY-DAVIDSON.
TAMPA, FL**

PERFORMANCE BOLD TEXT
T72 - Tag

**HARLEY-DAVIDSON.
OF DEALER NAME
TAMPA, FL**

OVERSIZED BOLD TEXT
T63 - Tag

***Dealer Name
Harley-Davidson.
TAMPA, FL***

BOLD TEXT
T14 - Tag



VF Licensed
Sports Group



CORE REPLENISHMENT

DEALER BRAND PRINTABLES





201. SIGNIFICANT B&S
Short sleeve crew neck jersey tee
5503: S-XL; 55X3: 2XL-3XL; 5XX3: 4XL-5XL
Black (8842)



202. PINK BAR & SHIELD
Short sleeve crew neck jersey tee
5503: S-XL; 55X3: 2XL-3XL; 5XX3: 4XL-5XL
Black (D272)



203. CHROME ADVANTAGE
Short sleeve crew neck jersey tee
5503: S-XL; 55X3: 2XL-3XL; 5XX3: 4XL-5XL
Black (H28F)



204. FIRE STRUCK
Short sleeve crew neck jersey tee
5Q11: S-XL; 5Q1X: 2XL-3XL
Safety Orange (HB4Q)



205. FURIOUS PISTONS
Short sleeve crew neck jersey tee
5Q11: S-XL; 5Q1X: 2XL-3XL
Safety Green (HB4P)



206. BIKER BREED
Crew neck jersey tank
5500: S-XL; 55X0: 2XL-3XL
Steel Heather (HC3P)



207. CHROME HALO
Short sleeve crew neck jersey tee
5504: S-XL; 55X4: 2XL-3XL; 5XX4: 4XL-5XL
Charcoal Heather (HC3Q)



208. GEAR STONE
Long sleeve hooded pullover fleece with pouch pocket
5642: S-XL; 5X42: 2XL-3XL; 5XX2: 4XL-5XL
Steel Heather (HC3R)



211. EXPOSED GEAR
Short sleeve scoop neck rib tee
5N16: XS-XXL; 5N6X: 1X-3X
Black (HC3T)



212. BIKE DETOUR
Short sleeve deep v-neck jersey tee
5M17: XS-XXL; 5M7X: 1X-3X
Black (H64T)



213. FIRE THROTTLE
Short sleeve deep v-neck jersey tee
5U26: XS-XXL; 5U6X: 1X-3X
Lush (HC3U)



VF Licensed
Sports Group



PRINTABLES CUSTOMIZATIONS



CUSTOMIZATION PRICING & MINIMUMS

- All of our Dealer Imprints will be color matched to the front of the garment.
- We reserve the right to change colors in order to meet minimums.

FULL BACK PRINTS



FULL: Full color, full size



W/C: Full color, reduced size



FULL: One color, full size

SIZE	PRICE	MINIMUM PIECES / COLOR	
Full	\$2.25 ea.	192	24
Full - One color	\$2.25 ea.	96	24
Full - Reflective	\$2.50 ea.	192	24
W/C	\$2.25 ea.	96	24
W/C Reflective	\$2.50 ea.	96	24
W/C Bling	\$3.00 ea.	96	24

TAG PRINTS



TAG: Full color



TAG: Full color Bling

SLEEVE PRINTS



SLEEVE: One color, standard sleeve size

SIZE	PRICE	MINIMUM PIECES / COLOR	
Tag - One color	\$2.00 ea.	96	24
Tag - Full color	\$2.25 ea.	96	24
Tag - Bling	\$3.00 ea.	96	24
Tag - Reflective	\$2.50 ea.	48	24

SIZE	PRICE	MINIMUM PIECES / COLOR	
Sleeve - One Color	\$2.00 ea.	48	24

TEXT TAG PRINTS



TEXT: One color

SIZE	PRICE	MINIMUM PIECES / COLOR	
Text	\$1.75 ea.	48	24

Text Tag / One Color: You can choose your font style. 48 piece min. per location.

Text Tag / Full Color: Available in the fonts noted on each design.

Note: Our tag prints are placed on the back of each garment just below the collar.

FULL COLOR



CLASSIC BANNER

S1 - Full S1 - Tag
S1 - W/C S1 - Slv



B&S

S2 - Full S2 - Tag
S2 - W/C S2 - Slv



AUTHORIZED

S4 - Full S4 - Tag
S4 - W/C S4 - Slv

Available in normal (N) and horizontal (H) font



RAZOR

S9 - Full S9 - Tag
S9 - W/C S9 - Slv



ESTABLISHED

S11 - Full S11 - Tag
S11 - W/C S11 - Slv



SOARING

S13 - Full S13 - Tag
S13 - W/C S13 - Slv



LEGENDS

S15 - Full S15 - W/C



LEGACY

S16 - Full S16 - W/C



POINTS

S18 - Full S18 - Tag
S18 - W/C S18 - Slv



WHIPPED

S19 - Full S19 - Tag
S19 - W/C S19 - Slv



PLATED

S20 - Full S20 - Tag
S20 - W/C S20 - Slv



SOUVENIR

S21 - Full S21 - Tag
S21 - W/C S21 - Slv

FULL COLOR



B&S BLADE
 S22 - Full S22 - Tag
 S22 - W/C S22 - Slv



B&S BLADE
 S22 - Full S16 - W/C

Shirt show through option - no CTC



PARADISE
 S23 - Full S23 - W/C



FLAG
 S24 - Full S24 - W/C
 Flag will change based on dealership location pending
 licensing approval



LET'S ROLL
 S25 - Full S25 - W/C



BRUSHED TRADITION
 S26 - Full S26 - Tag
 S26 - W/C S26 - Slv
 Available in normal (N) and horizontal (H) font



PINNACLE
 S27 - Full S27 - W/C



EAGLE CENTER
 S28 - Full S28 - W/C



STATEMENT
 S29 - Full S29 - W/C

State will change based on dealership location



MOLTEN B&S
 S31 - Full S31 - W/C



MOLTEN B&S
 S31 - Full S31 - W/C

Shirt show through option - no CTC



SKULL
 S33 - Full S33 - Tag
 S33 - W/C S33 - Slv

FULL COLOR



#1 LIVE RIDE
S36 - Full S36 - W/C



WINGED SKULL
S39 - Full S39 - Tag
S39 - W/C S39 - Slv



ROAD AWAITS
S42 - Full S42 - W/C



TRADITION
S43 - Full S43 - W/C



IMPACT TORCH
S44 - Full S44 - W/C



BONE FACTORY
S45 - Full S45 - W/C

No BP Color, only available in font shown



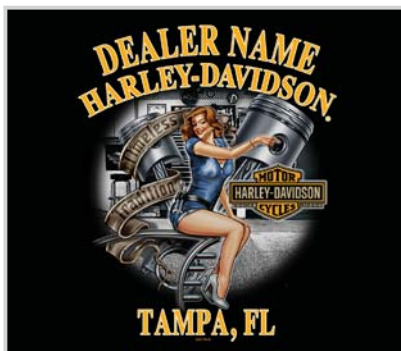
#1 FLAME
S51 - Full S51 - W/C



#1 RACING
S53 - Full S53 - Tag
S53 - W/C S53 - Slv
Only available in font shown



STONE B&S
S55 - Full S55 - Tag
S55 - W/C S55 - Slv



SHOP PIN-UP
S56 - Full S56 - W/C



RUSTIC SIGN
S58 - Full S58 - Tag
S58 - W/C S58 - Slv
Only available in font shown



EAGLE FLAG
S61 - Full S61 - Tag
S61 - W/C S61 - Slv

FULL COLOR



B&S ENGINE
 S62 - Full S62 - Tag
 S62 - W/C S62 - Slv



MOLTON EAGLE
 S64 - Full S64 - W/C



EAGLE COASTAL
 S68 - Full S68 - W/C
 Only available in font shown



WOLF COASTAL
 S69 - Full S69 - W/C
 Only available in font shown



WOLF MOUNTAIN
 S70 - Full S70 - W/C
 Only available in font shown



EAGLE MOUNTAIN
 S71 - Full S71 - W/C
 Only available in font shown



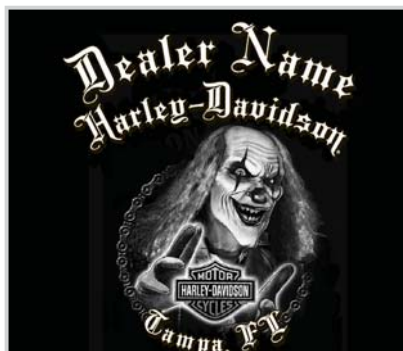
PATRIOTIC FACT
 S73 - Full S73 - Tag
 S73 - W/C
 Available in normal (N) and cursive (C) font



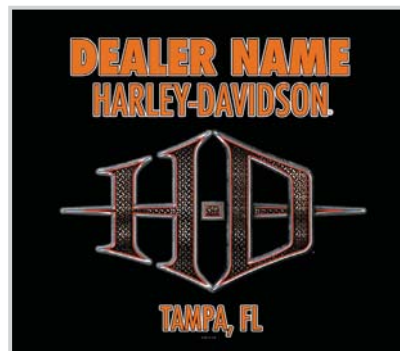
TRIBAL B&S
 S75 - Full S75 - Tag
 S75 - W/C



EMBOSSSED EAGLE
 S76 - Full S76 - W/C
 Available in normal (N) and cursive (C) font



CLOWN
 S77 - Full S77 - W/C
 No BP color, only available in font shown



STEEL H-D®
 S80 - Full S80 - W/C
 Available in normal (N) and horizontal (H) font



OLD SCHOOL PINUP
 S81 - Full S81 - W/C
 Available in normal (N) and cursive (C) font

FULL COLOR



VINTAGE FLAG

S82 - Full S82 - W/C

Flag will change based on dealership location pending licensing approval



LICENSE PLATE

S83 - Full S83 - W/C

Only available in font shown, graphic will change based on dealership location pending licensing approval



CARBON B&S

S84 - Full S84 - W/C

Available in normal (N) and cursive (C) font



SHADOW BIKE

S87 - Full S87 - W/C

Available in normal (N) and horizontal (H) font



BIKE BLUE PRINT

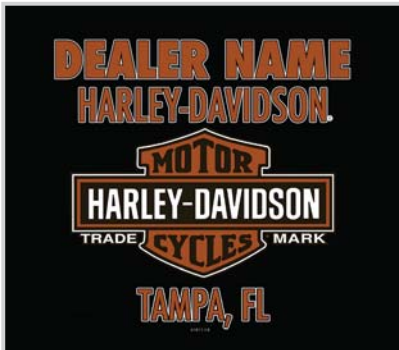
S91 - Full S91 - W/C

Only available in font shown



SUNSET CHROME

S93 - Full T60 - Tag
S93 - W/C



VINTAGE B&S

S94 - Full T61 - Tag
S94 - W/C

Available in normal (N) and horizontal (H) font



RACING EAGLE

S95 - Full S95 - Tag
S95 - W/C

Only available in font shown



PAINTED TANK

S97 - Full S97 - W/C



CHROME PIPES

SA2 - Full SA2 - W/C

Only available in font shown



WILLIE G PLATED

SA3 - Full SA3 - Tag
SA3 - W/C

Available in normal (N) and cursive (C) font



EAGLE LANDING

SA6 - Full SA6 - W/C

Available in normal (N) and cursive (C) font

FULL COLOR



BEACH BIKE

SA7 - Full SA7 - W/C

Available in normal (N) and cursive (C) font



RIVER BIKE

SA8 - Full SA8 - W/C

Available in normal (N) and cursive (C) font



STEEL EAGLE

SB3 - Full SB3 - W/C

Available in normal (N), cursive (C), and new script (2) font



METAL PLATE

SB5 - Full SB5 - W/C

Only available in font shown

Gothic font available on most Full and W/C full color stock back prints. All "S" tags and sleeves are one color. Font Legend: N=Normal H=Horizontal G=Gothic C=Cursive Please indicate font of choice. Default is (N) normal

ONE COLOR



OLD ENGLISH

S41 - Full S41 - Tag
S41 - W/C S41 - Slv



B&S

S48 - Full S48 - Tag
S48 - W/C S48 - Slv

Only available in font shown



VINTAGE B&S

S52 - Full S52 - Tag
S52 - W/C S52 - Slv

Only available in font shown



FEMININE FONT

S57 - W/C - F



WILLIE G

S60 - Full S60 - Tag
S60 - W/C S60 - Slv

Only available in font shown



OLD SCHOOL SCROLL

S63 - W/C

Available in normal (Y) and cursive (W) font

ONE COLOR



ROSES AND BARB WIRE
S78 - W/C

Available in normal (Y) and cursive (W) font



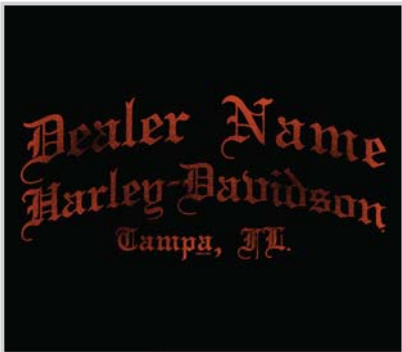
LONG B&S WEATHERED
S85 - Full S85 - Tag
S85 - W/C

Only available in font shown



DIVINENESS
S88 - W/C

Available in normal (Y) and cursive (W) font



OLD ENGLISH WEATHERED
S92 - Full S92 - Tag
S92 - W/C



WEATHERED BOLD
S98 - Full S98 - W/C



OVERSIZED BOLD
S99 - Full S99 - W/C



ROCKIN' WINGS
SB2 - W/C

Only available in font shown



STACKED WILLIE G
SB4 - Full SB4 - Tag
SB4 - W/C

Only available in font shown



STACKED B&S
SB8-Full SB8-Tag
SB8-W/C

Only available in font shown

WOMEN / CHILDREN



MOON STRUCK
S30 - W/C

Only available in cursive font



HOT ALUMINUM
S32 - Full

Only available in cursive font



AFFLICTED
S34 - W/C - C (Cursive)

Only available in cursive font

WOMEN / CHILDREN



ROSES B&S
S37 - W/C - Z (Sloped)

Only available in sloped font



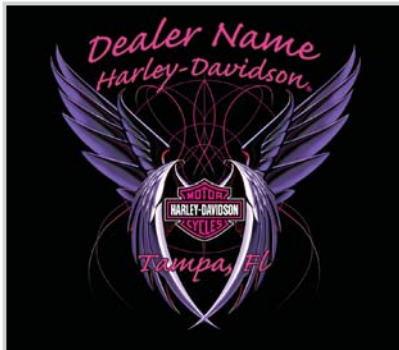
WINGED HEART
S40 - W/C

Only available in cursive font



OLD SCHOOL SCROLL
S46 - W/C

Only available in cursive font



WINGED ENTITY
S47 - W/C - C (Cursive)

Only available in cursive font



WINGED B&S
S50 - W/C - C (Cursive)

Available in cursive (C) and new script (2) font



ENDLESS FLIGHT
S54 - W/C - C (Cursive)

Only available in cursive font



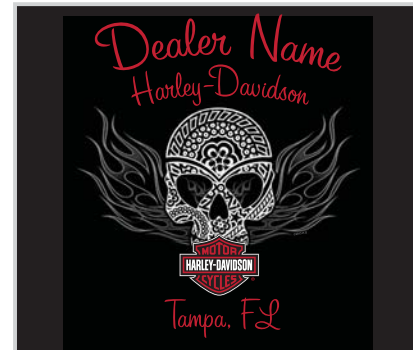
INTO THE WIND
S59 - W/C

Available in normal (N), cursive (C), new script (2) font



NEUTRAL WINGED HEART
S65 - W/C

Available in normal (N) and cursive (C) font



SKULL TOOTH
S74 - W/C

Available in normal (N), cursive (C), new script (2) font



FEMME H-D®
SA4 - W/C

Available in normal (N) and cursive (C) font



NEUTRAL WINGED HEART
SA5 - W/C

Available in normal (N) and cursive (C) font



FLORAL H-D®
SA9 - W/C

Available in normal (N) and cursive (C) font

WOMEN / CHILDREN



SIDE FLAMES

SB1 - Full SB1 - W/C
Available in normal (N) and cursive (C) font



WILLIE G WINGS

SB6 - W/C
Available in normal (N), cursive (C), new script (2) font



H-D® WING

SB9 - W/C
Available in normal (N), cursive (C), new script (2) font

BLING



WING BLING

S72 - W/C
Available in normal (N) and cursive (C) font



H-D® BLING (ONE COLOR)

S79 - W/C
Available in normal (Y) and cursive (W) font

REFLECTIVE PRINT



CLASSIC BANNER REFLECTIVE (HEAT SEAL)

S35 - Full with Reflective B&S



NORMAL REFLECTIVE (HEAT SEAL)

T39 - Tag with Reflective B&S



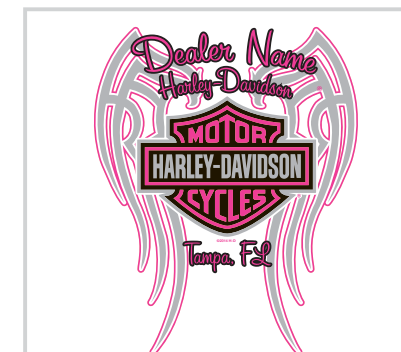
NORMAL REFLECTIVE (REFLECTIVE INK)

S86 - Full S86 - W/C
Available in normal (N) and cursive (C) font



REFLECTIVE B&S (REFLECTIVE INK)

S96 - Full S96 - W/C



TRIBAL WINGS (REFLECTIVE INK)

S90 - W/C S90 - Tag
Available in normal (N), cursive (C), new script (2) font

TAG PRINT - ONE COLOR



TATTOO TAG
T1 - S T1 - B



TAMPA, FL
DESERT TAG
T2 - S T2 - B



TAMPA, FL
PALM TAG
T3 - S T3 - B



TAMPA, FL
HEARTLAND TAG
T4 - S T4 - B



TAMPA, FL
MOUNTAIN TAG
T5 - S T5 - B



TAMPA, FL
FLAME TAG
T6 - S T6 - B



TAMPA, FL
ROSE TAG
T7 - S T7 - B



Dealer Name
Harley-Davidson
TAMPA, FL
WING TAG
T8 - S T8 - B



TAMPA, FL
DRAGON TAG
T9 - S T9 - B



TAMPA, FL
BARBED WIRE TAG
T10 - S T10 - B



TAMPA, FL
RAZOR TAG
T11 - S T11 - B



Dealer Name
Harley-Davidson
TAMPA, FL
OLD SCHOOL SCROLL TAG
T40 - S T40 - B



TAMPA, FL
WINGED B&S
T44 - S T44 - B



Dealer Name
Harley-Davidson
TAMPA, FL
ROSES & BARB WIRE
T51 - S T51 - B



Dealer Name
Harley-Davidson
TAMPA, FL
DIVINENESS TAG
T57 - C T57 - B



TAMPA, FL
ROCKIN' WINGS
T68

Only available in font shown



STACKED WILLIE G
SB4

Only available in font shown



STACKED B&S
SB8

Only available in font shown

TAG PRINT - FULL COLOR



SCROLLS TAG
T15 - C



SPIRIT TAG
T16 - C



B&S TAG
T17 - C



BUMP TAG
T18 - C



UPLIFT TAG
T19 - C



OLD SCHOOL SCROLL TAG
T22 - C



AFFLICTED TAG
T23 - C



ROSES TAG
T32 - Z



WINGED HEART TAG
T33 - C



WINGED B&S TAG
T35 - C T35-2

Available in cursive and new script font



ENDLESS FLIGHT TAG
T36 - C



INTO THE WIND TAG
T38 - C T38-2

Available in cursive and new script font



NEUTRAL WINGED HEART TAG
T42 - C T42 - L

Available in cursive and bold font



PATRIOTIC FACT TAG
T47 - C T47 - L

Available in cursive and bold font



SKULL TOOTH TAG
T48 - C T48 - L T48-2

Available in cursive, bold, and new script font



TRIBAL B&S TAG
T49 - C T49 - L

Available in cursive and bold font



EMBOSSD EAGLE TAG
T50 - C T50 - L

Available in cursive and bold font



STEEL H-D® TAG
T54 - C T54 - L

Available in cursive and bold font



CARBON B&S® TAG
T55 - C T55 - L

Available in cursive and bold font



REFLECTIVE BOLT
T56 - C T56 - L

Available in cursive and bold font

TAG PRINT - FULL COLOR



TRIBAL WINGS

(Reflective Ink)

S90 - C S90 - L S90 - 2

Available in cursive, bold, and new script font



FEMME H-D®

T64-C T64 - L

Available in cursive and bold font



CORSET WINGS

T65 - C T65 - L

Available in cursive and bold font



FLORAL H-D®

T66-C S66-L

Available in cursive and bold font



SIDE FLAMES

T67-C T61-L

Available in cursive and bold font



STEEL EAGLE

T69-C T69-L T69-2

Available in cursive, bold and new script font



WILLIE G WINGS

T70-C T70-L T70-2

Available in cursive, bold, and new script font



H-D® WING

T71-C T71-L T71-2

Available in cursive, bold, and new script font

Font Legend: L=Bold C=Cursive 2=New Script Please indicate font of choice.

TAG PRINT - BLING



LADIES' BLING

T21 - C



WING BLING

T46 - C T46 - L

Available in cursive and bold font



H-D® BLING (ONE COLOR)

T53 - S T53 - B

Available in scripty and bold font

Font Legend: L=Bold C=Cursive B= 1 Color Bold S= 1 Color Scripty Please indicate font of choice.

TEXT PRINT - ONE COLOR



SCRIPTY TEXT

T13 - Tag



BOLD TEXT

T14 - Tag



GOTHIC TEXT

T30 - Tag



OLD ENGLISH TEXT

T34 - Tag



FEMININE FONT TEXT

T37 - Tag



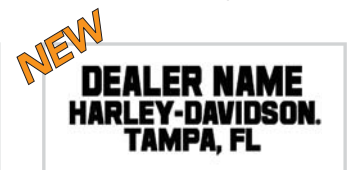
WEATHERED BOLD TEXT

T62 - Tag



OVERSIZED BOLD TEXT

T63 - Tag



PERFORMANCE BOLD TEXT

T72 - Tag

Note: Text print size is 3"x5"



ON MODEL/ IRON PURSUIT



01. FORGED TO LAST

Short sleeve crew neck jersey tee
with contrast stripes

H670: S-XL; H70Z: 2XL-3XL

Natural Gray Heather/Black Heather/New Texas Orange
(HB8J)

02. DIRT WRATH

Short sleeve henley with contrast
sleeves and hem lining and H-D®
branded buttons

H695: S-XL; HXV5: 2XL-3XL

Athletic Gray Heather/Natural Gray Heather (HB8L)



ON MODEL/ DIRT WRATH



01



02



03



04

03. SUPERIOR RIDER

Long sleeve crew neck raglan slub thermal tee with cuffs

H748: S-XL; H78X: 2XL-3XL

Stone Heather/Black Heather (HB8Q)

04. QUALITY OIL

Short sleeve synthetic polo with wicking and H-D® branded buttons

H726: S-XL; H26Z: 2XL-3XL

Charcoal Heather (HB8M)



05. IRON PURSUIT

Short sleeve pique polo with yarn-dye stripe rib and H-D® branded buttons

H827: S-XL; H27Z: 2XL-3XL

Black/Black-Athletic Gray Heather-New Texas Orange/
New Texas Orange (HB8X)

06. HANDLEBAR COALITION

Long sleeve hooded denim heather fleece pullover with cuffs, pouch pocket and H-D® branded grommets

H800: S-XL; HV08: 2XL-3XL

Black Denim Heather (HB8U)



06



07

07. INSANE JOURNEY

Short sleeve v-neck synthetic tee with wicking and contrast shoulder stripes

H694: S-XL; HV94: 2XL-3XL
Black/Castlerock (HB8K)

08. FIRE OF FURY

Long sleeve heavyweight slub jersey hooded henley with cuffs and H-D® branded buttons

H755: S-XL; HV55: 2XL-3XL
Black Heather/Black (HB8S)





09

09. LIVING CHAIN

Short sleeve synthetic colorblock polo with wicking and H-D® branded buttons

H728: S-XL; HV28: 2XL-3XL

Black/Castlerock/Flame Orange (HB8N)

10. MAXIMUM LEGEND

Long sleeve crew neck jersey tee with rib piecing, v-patch and cuffs

H747: S-XL; HV47: 2XL-3XL

Black Heather (HB8P)

11. IRON BUILT SOUL

Long sleeve mock neck plaited stripe full-zip with welt pockets and H-D® branded trims

H757: S-XL; HV57: 2XL-3XL

Athletic Gray Heather-Black/Black (HB8T)



10



11



12



13

12. V-TWIN HISTORY

Short sleeve crew neck colorblock tee
with yarn-dye rib collar

H659: S-XL; HX59: 2XL-3XL

Dark Slate Heather/Black/Steel Heather
(HB8W)

13. POWERFUL POWER

Short sleeve synthetic pocket polo with wick-
ing, sublimated stripes, self-fabric snap down
collar and H-D® branded buttons

H850: S-XL; H05Z: 2XL-3XL

White (HB8Y)



14. FAST PACED

Long sleeve jersey henley with taslon piecing on pockets and placket, and H-D® branded trims

H749: S-XL; HVZ7: 2XL-3XL

Black (HB8R)



15. INFINITY SPEED

Long sleeve hooded synthetic full-zip fleece with wicking, pouch pocket and H-D® branded trims

H858: S-XL; HX58: 2XL-3XL

Dark Slate/Black (HB8V)



ON MODEL/ REBELLIOUS RIDE





16. REBELLIOUS RIDE
Short sleeve deep v-neck stretch jersey tee
with laser cut-out satin piecing
H911: S-XXL; H11Z: 1X-3X
Black (HB94)



17. BIKER MADNESS

**Long sleeve scoop neck thermal tee with zip
placket and H-D® branded zipper pull**

H945: S-XXL; HXV4: 1X-3X

Charcoal Heather (HB99)



18. PARKED OUT FRONT
Short sleeve scoop neck stretch synthetic tee with wicking, ruching and drop-tail hem
HU38: S-XXL; H38V: 1X-3X
Violet Quartz (HB9E)

19. UNLEASHED MADNESS
Long sleeve open v-neck heavy-weight slub jersey pullover with pouch pocket and raw edges
H946: S-XXL; HV46: 1X-3X
Nightshade (HB9A)

20. VOLATILE FREEDOM
Long sleeve raglan 3 button fleece hoodie with H-D® branded trims
H985: S-XXL; H58Z: 1X-3X
Violet Quartz/Charcoal Heather (HB9B)

18



19



20



21

21. SHARP TURN

Scoop neck synthetic stretch racerback tank with wicking and curved hem

H900: S-XXL; HV90: 1X-3X
Tangerine Tango (HB91)

22. METAL MACHINE

Short sleeve v-neck rayon blend jersey tee with solid contrast yoke, pocket and high-low hem

H903: S-XXL; HXX0: 1X-3X
Charcoal Mock Twist/Black (HB92)

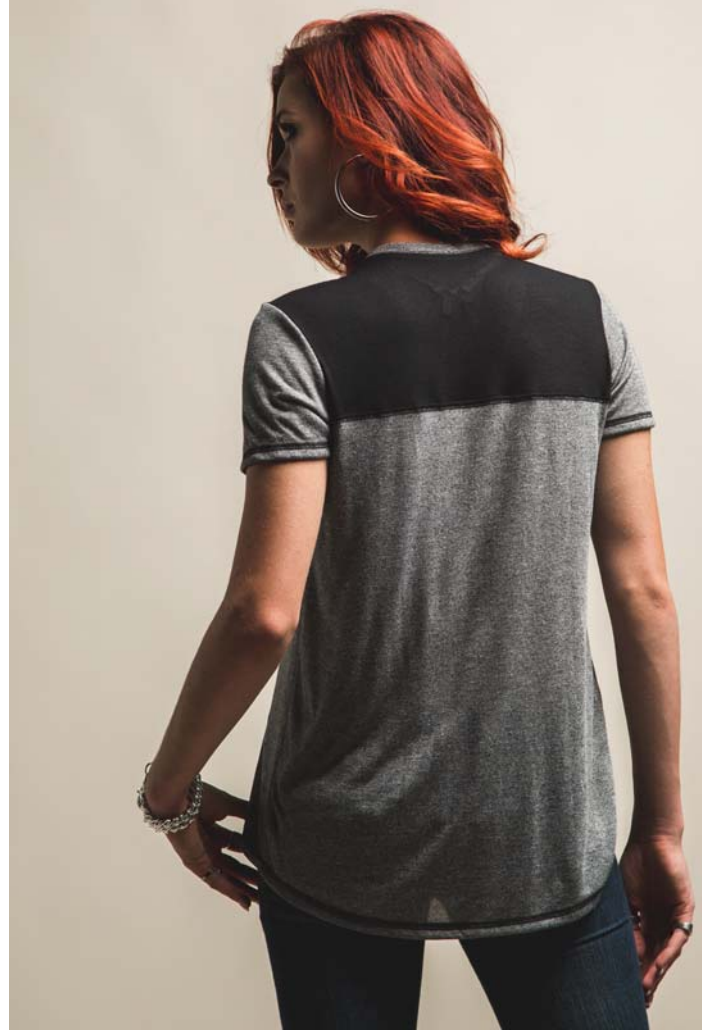
23. V-TWIN EMPIRE

Long sleeve snap-front mock neck stretch jersey tee with thumbholes and H-D® branded trims

H943: S-XXL; HVZ4: 1X-3X
Black (HB98)



22



23





24

24. PURE VOLTAGE

Short sleeve v-neck synthetic tee with wicking, shoulder piecing and side vents

H913: S-XXL; H13Z: 1X-3X
Black/Wild Apricot/Off White (HB95)

25. BURNING ROADS

Long sleeve raglan full-zip denim heather hoodie with pouch pocket and H-D® branded trims

H986: S-XXL; H86Z: 1X-3X
Black Denim Heather (HB9C)



25

26. HARLEY® EMPIRE
Scoop neck stretch jersey tank
with embroidered sheer piecing
H899: S-XXL; H89Z: 1X-3X
Black (HB8Z)



26

27. ULTIMATE BLAZE

Long sleeve raglan open neck slub
thermal tee with curved hem
and thumbholes

H936: S-XXL; HX36: 1X-3X

Lobster Bisque/Charcoal Heather (HB97)



27



28



29

28. NOCTURNAL FLAMES

1/2-sleeve colorblock open neck stretch jersey tee with front keyhole

H909: S-XXL; HZ09: 1X-3X
Black/Rio Red (HB93)

29. RIDER'S OBSESSION

Long sleeve scoop neck stretch jersey tee with ruching

H935: S-XXL; HZ05: 1X-3X
Rio Red (HB96)

30. WINGED POWER

Long sleeve raglan mock neck full-zip fleece with contrast piecing, on-seam pockets and H-D® branded zipper pull

H957: S-XXL; H57X: 1X-3X
Black/Rio Red (HB9D)



30





EMBROIDERY CUSTOMIZATIONS



A design selected from the options displayed will be embroidered on your garment using your dealer name and location. When placing your order, be sure to select either the Block or Scripty font. Please refer to the order form for availability of customization placement on each item. There is a minimum purchase of 24 pieces per customization and per font style (Block or Scripty).



BLOCK - SDA, BDA, HDA, LDA
SCRIPTY - SSA, BSA, HSA, LSA



BLOCK - SDB, BDB, HDB, LDB
SCRIPTY - SSB, BSB, HSB, LSB



BLOCK - SDZ, BDZ, HDZ
SCRIPTY - SSZ, BSZ, HSZ



BLOCK - SD1, BD1
SCRIPTY - SS1, BS1



BLOCK - SD2, BD2, HD2, RD2, ZD2, LD2
SCRIPTY - SS2, BS2, HS2, RS2, ZS2, LS2



BLOCK - SD4, BD4, HD4, LD4
SCRIPTY - SS4, BS4, HS4, LS4



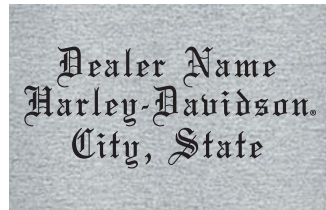
BLOCK - SDD, BDD, HDD, LDD
SCRIPTY - SSD, BSD, HSD, LSD



BLOCK - SD7, BD7, LD7
SCRIPTY - SS7, BS7, LS7



BLOCK - SDC, BDC, TDC, HDC, LDC
SCRIPTY - SSC, BSC, TSC, HSC, LSC



OLD ENGLISH SEE, BEE
HEE, REE, ZEE, LEE



BLOCK - SDU, BDU, HDU, LDU
SCRIPTY - SSU, BSU, HSU, LSU



BLOCK - SDL, BDL, HDL, RDL
SCRIPTY - SSL, BSL, HSL, RSL



BLOCK - SDG, BDG, HDG, LDG
SCRIPTY - SSG, BSG, HSG, LSG



BLOCK - SDF, BDF, HDF, LDF
SCRIPTY - SSF, BSF, HSF, LSF



BLOCK - SDJ, BDJ, HDJ, LDJ
SCRIPTY - SSJ, BSJ, HSJ, LSJ



BLOCK - SDK, BDK, HDK, LDK
SCRIPTY - SSK, BSK, HSK, LSK

Customization Legend: S - Left Sleeve B - Back H - Left Hem R - Right Sleeve Z - Hood L - Left Chest

AREA	SALES REP	EMAIL	PHONE	FAX	CUSTOMER SERVICE REP
IL North / WI	Abby Buckley	abby_buckley@vfc.com	Cell. 414-526-6612	615-882-2647	Cynthia Sicardo 813-969-6402
MI / IN / N. KY	Anne Eldridge	anne_eldridge@vfc.com	Cell. 248-877-7427 Office 248-698-3705	615-882-8182	Kacee Cole 813-969-6384
MN / ND / AK / IA / SD East	Brenda Baranczyk	brenda_baranczyk@vfc.com	Cell. 262-389-1525	615-882-2742	Kacee Cole 813-969-6384
CO / ID / MT / UT / WY / NM	Tracey Radant	tracey_radant@vfc.com	Cell. 615-521-3961	615-886-1265	Kacee Cole 813-969-6384
NY West & Northeast ME / RI / VT / NH / MA	Desiree Palka	desiree_palka@vfc.com	Cell. 716-783-1046 Office 716-773-4528	615-882-2389	Barbara Pauline 813-969-6247
CA Northern / OR WA / NV	Flint Putman	flint_putman@vfc.com	Cell. 530-713-0577 Office 530-673-3907	530-673-7198 615-882-2783	Barbara Pauline 813-969-6247
PA NE / NY / NJ North Long Island / CT	Gene Caponigro	gene_caponigro@vfc.com	Cell. 610-393-8979 Office 610-298-2312	610-298-8337	Kacee Cole 813-969-6384
KS / AR West / MO SD / IL Central & South / NE	Mike Doran	mike_doran@vfc.com	Cell. 913-486-6497 Office 816-252-0052	816-252-0441	Barbara Pauline 813-969-6247
PA West & Mid / WV / OH	Renee Rein	reneerein@windstream.net	Cell. 740-504-5415 Office 740-745-2162	740-745-1327 615-882-2651	Ann Matthews 813-969-6314
PA (SE) / MD / DE VA (NE) / NJ (South)	Jeffrey Santiago	jeffrey_santiago@vfc.com	Cell. 813-215-1962	615-882-8048	Kacee Cole 813-969-6384
FL / GA / SC West NC West	Beth Hughes Robin Hughes	bethhughes@charter.net	Cell. 864-230-4236 Cell. 864-230-3059 Office 864-244-6782	864-244-6782	Ann Matthews 813-969-6314 Jeannie Cannon 813-969-6348
TX / OK	TBD		Cell. Office		Barbara Pauline 813-969-6247
SC East / VA / NC East	John Treadaway	treadaway@hargray.com	Cell. 843-301-1203 Office 843-681-2151	877-200-6704	Ann Matthews 813-969-6314
CA Southern / AZ	Teena Baeza	teena_baeza@vfc.com	Cell. 805-205-4325	615-882-2550	Ann Matthews 813-969-6314
TN / KY / AL / LA / MS FL Panhandle AR Central & East	Sandy Frankow	sfrankow@gmail.com	Cell. 636-357-2686 Office 636-357-2686	636-980-1556	Kacee Cole 813-969-6384
Canada	Rob Hill Julie Wolfe	rob@skiwaka.com julie@skiwaka.com	Cell. 250-488-0669 Office 250-487-1521 Cell. 613-676-3882 Office 613-632-7565	250-487-1510 613-632-7810	Jeannie Cannon 813-969-6348
Germany / Austria Switzerland - German Speaking South Africa	Claudio Koch	info@osseurope.com	Cell. +49 0 177-230 2001 Office +49 0 2622-904 034	+49 0 2622-904 035 +49 0 321-21 21 3756	Cynthia Sicardo 813-969-6402
Middle East	Solène Gully	solenehd@gmail.com	Cell. +973 3934 8949	+33 - 4 86 17 21 39	Cynthia Sicardo 813-969-6402
Italy	Thomas Annecca Christa Annecca	thomas@micki-bikerino.com christa.annecca@micki-bikerino.com	Cell. +39-336 20 886 16 Office +39-0444-60 10 28	+39-0444-40 55 53	Cynthia Sicardo 813-969-6402
U.A.E. / Oman / Oceania / Asia / N. Africa / France / Switzerland (French Speaking) / Hawaii / Spain / Portugal / New Zealand / Eastern Eurpoe	Lori Kuchenbecker	lori_kuchenbecker@vfc.com	Cell. 262-203-3272 Office 262-203-3272	615-882-2769	
Australia	Tony Joubert	tony@avenuemarketing.com.au	Cell. +61 419 137 822		Cynthia Sicardo 813-969-6402
Scandanavia - Denmark / Sweden / Norway / Finland	Peter Hvidberg	hd@outlet.dk	Cell +45 20 47 18 02 Office +45 46 91 10 23		Cynthia Sicardo 813-969-6402
Netherlands / Belgium / U.A.E. Luxembourg / Oman United Kingdom / Ireland / Malta / Greece Cyprus Reunion / Mauritius	Hans Wohl	hans.wohl.hd@gmail.com	Cell. +31 0 6-2249 7756		Cynthia Sicardo 813-969-6402
Latin America	Klaus Sydow	ksydow@outfield.us	Cell. 214-208-1280		Cynthia Sicardo 813-969-6402
France	Vincent Plaidy	vincent7550@yahoo.com	Cell +33685978810 Office +33143710164		Cynthia Sicardo 813-969-6402

VF LICENSED SPORTS GROUP, A DIVISION OF VF IMAGEWEAR, INC.

PRICING: All prices F.O.B. Appleton Wisconsin. Prices subject to change without notice.

SHIPPING: Via UPS or FedEx Ground.

TERMS: Net 30 days with approved account. Cash in advance, company check, credit card, and wire transfer for international dealers.

BACK ORDERS: Back orders will be cancelled on balances under \$50 unless otherwise requested.

COUNTRY OF ORIGIN : IMPORTED / All items in this catalog are imported from countries approved by Harley-Davidson® Motor Company.

DELIVERY DATE: Delivery dates indicated in the catalog refer to the dates that the product will be delivered to your dealership.

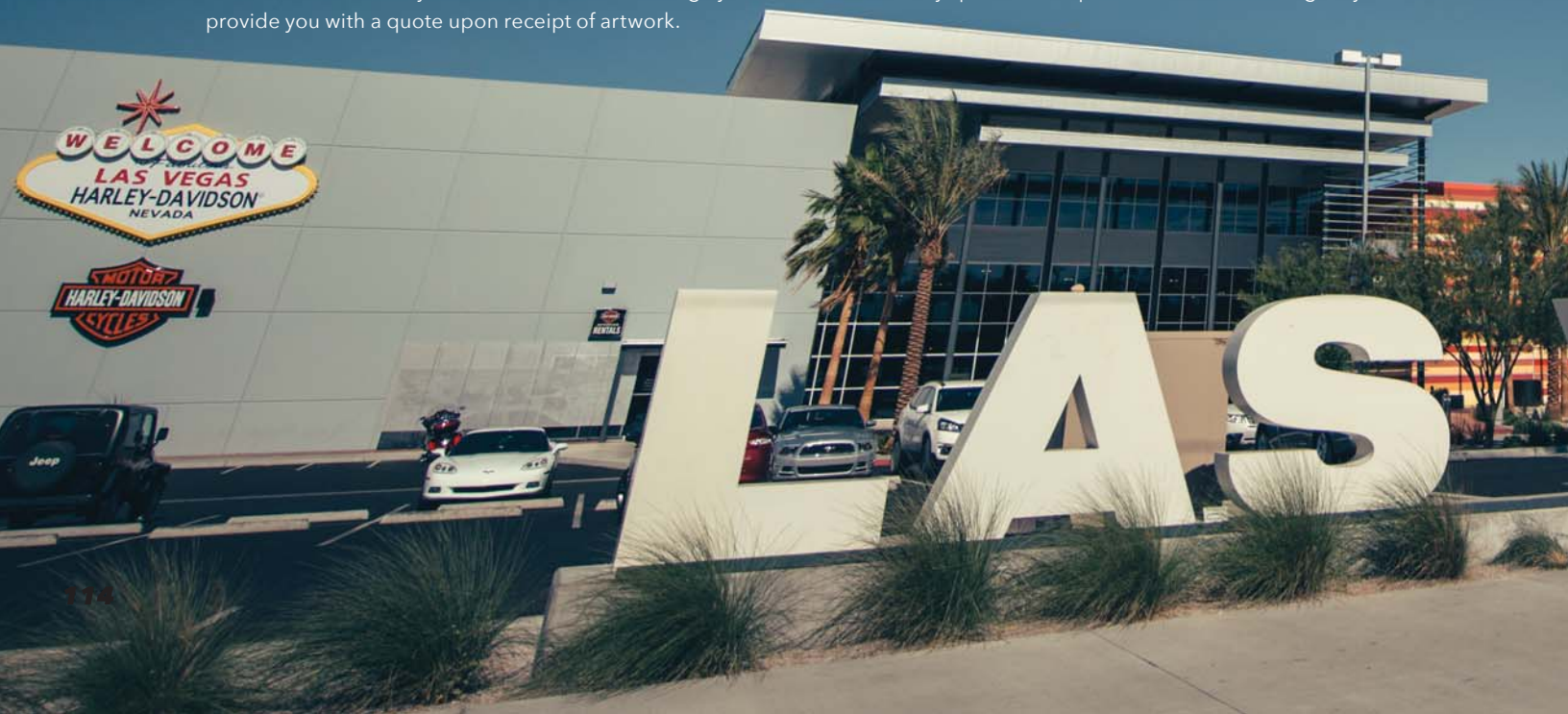
NOTE: Embroidery prices represent a specific stitch count. Any changes in design and stitch counts may result in higher pricing. Actual garment and design colors may vary from catalog images. All items pictured are imported. Substitutions may be made at the discretion of VF Licensed Sports Group, a division of VF Imagewear, Inc.

No Return Cancellation Policy: At VF Licensed Sports Group your satisfaction is our primary focus and we guarantee the quality of our products. Occasionally, a substandard garment may get past our quality control inspectors. If this happens and you receive defective merchandise, please call your Customer Service Representative (CSR). Please have the sales order number and invoice number ready when requesting credit for defective merchandise.

An exception to the No Return Policy will be made in the unlikely event that you receive another dealership's merchandise or merchandise that was shipped with an incorrect dealer personalization. Should this happen, please contact your CSR for assistance. VF Licensed Sports Group will not accept any returned merchandise without prior authorization. Due to the fact that merchandise is booked with our suppliers based upon actual orders, cancellations are not permitted.

NOTE: Some artwork reflected in this catalog may vary to conform with licensing approval requirements. Some artwork may be rejected entirely. Actual garment design and colors may vary from catalog images.

VF Licensed Sports Group, a division of VF Imagewear, Inc. produces Harley-Davidson® products exclusively for authorized dealers. We welcome your comments and encourage you to contact us for any special event product needs. We will gladly provide you with a quote upon receipt of artwork.





VEGAS

HARLEY-DAVIDSON

MOTOR
HARLEY-DAVIDSON
SHOP



4408 West Linebaugh Avenue / Tampa, Florida 33624 / Tel 800.886.4759 / Fax 800.536.5859

VF Licensed Sports Group, a division of VF Imagewear, Inc.
HARLEY, HARLEY-DAVIDSON and the Bar & Shield Design are among the trademarks of H-D U.S.A., LLC ©2015 H-D and its Affiliates.
All Rights Reserved. VF Imagewear is a licensee of Harley-Davidson Motor Company.